

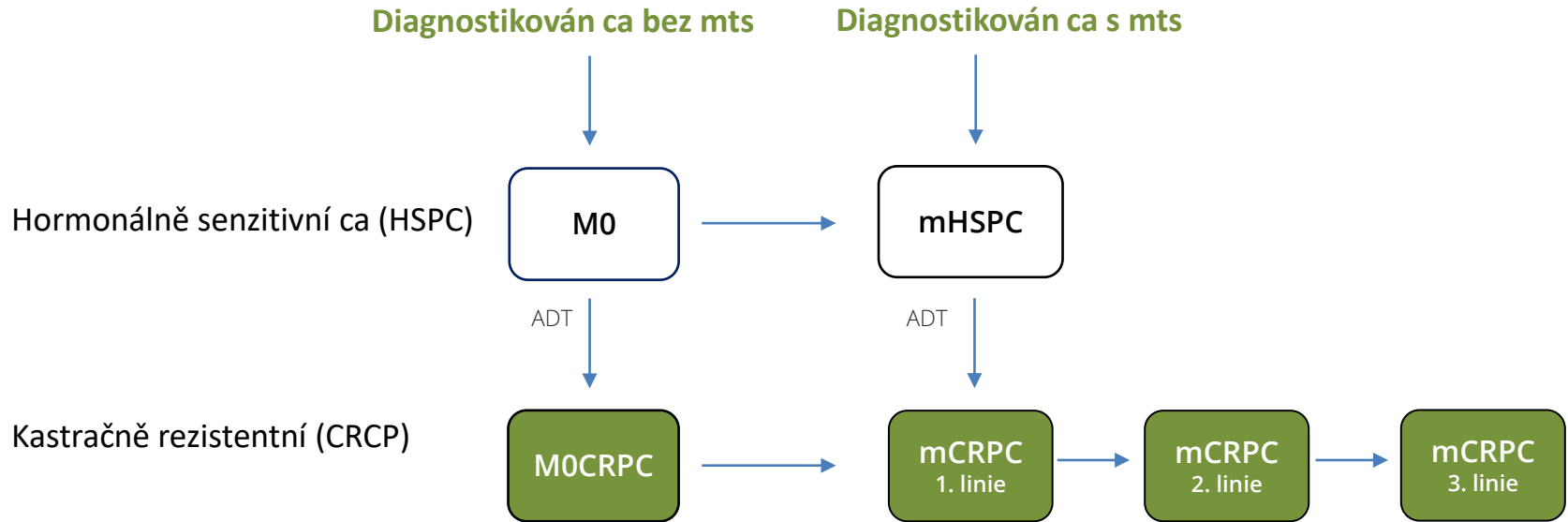
# Karcinom prostaty

*Význam mezioborové spolupráce a multidisciplinárního týmu*

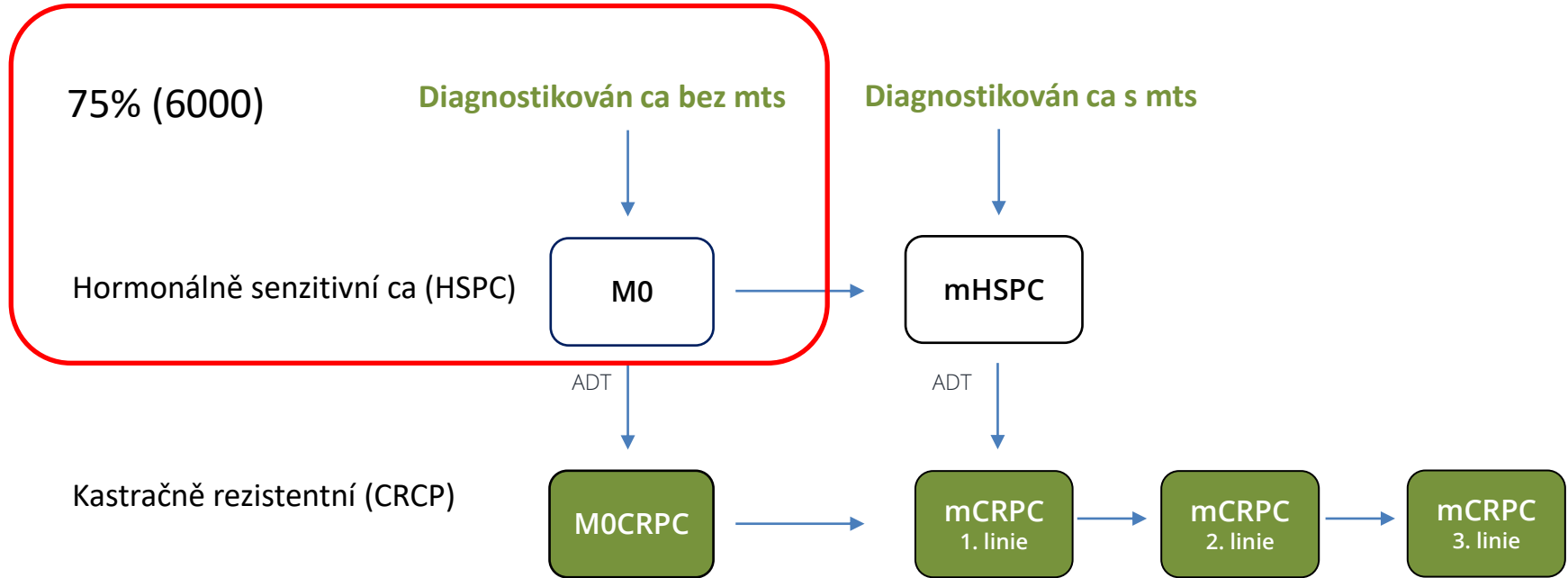
Tomáš Büchler

2. LF UK a FN v Motole, Praha

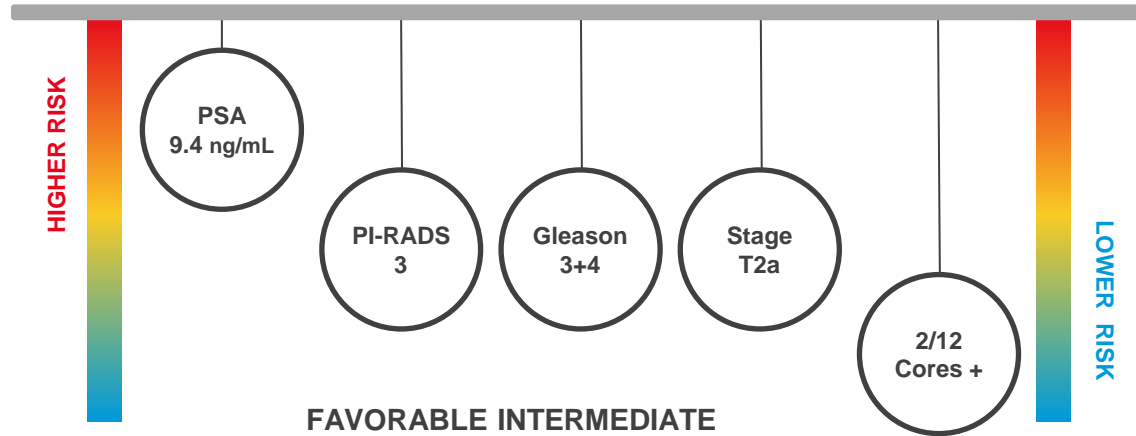
# Fáze onemocnění



# Fáze onemocnění



# Lokalizované onemocnění: konvenční stratifikace



# Lokalizované onemocnění

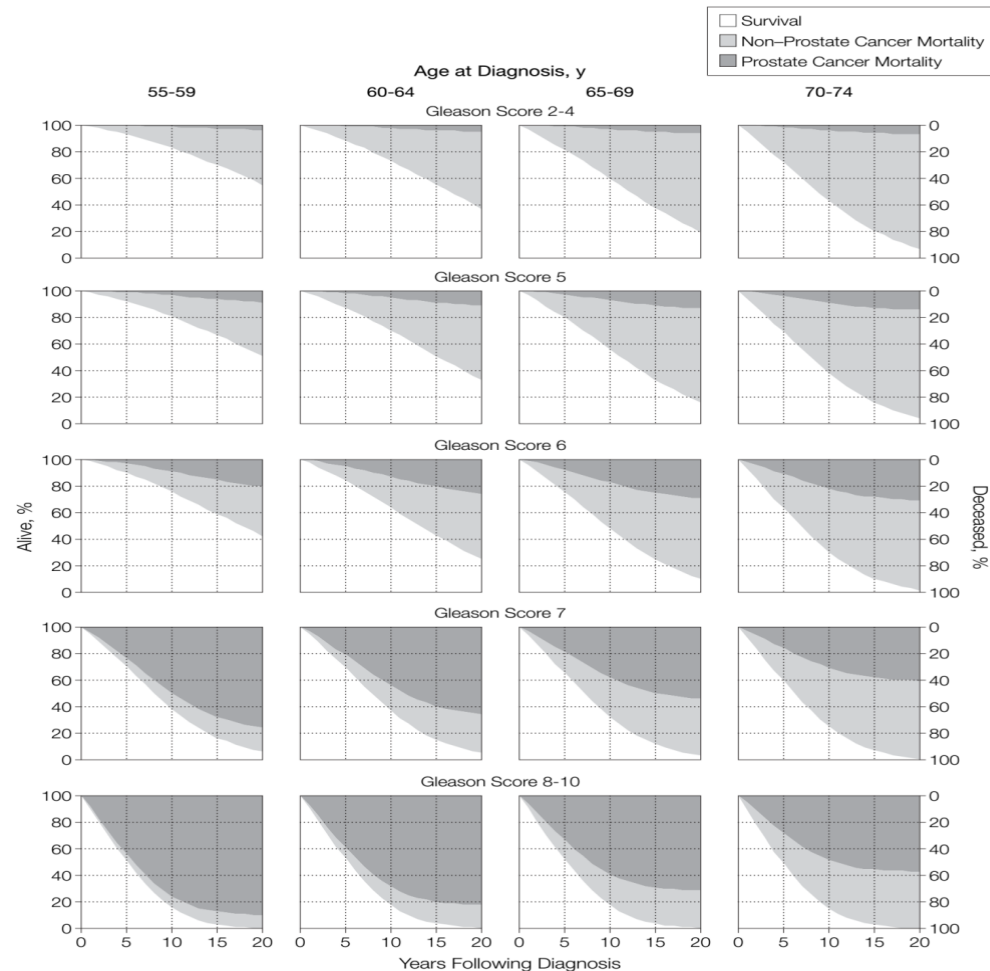
Risk group	Clinical/pathologic features			
Very low <sup>g</sup>	<ul style="list-style-type: none"> <li>• T1c AND</li> <li>• Gleason score <math>\leq 6</math>/grade group 1 AND</li> <li>• PSA <math>&lt; 10</math> ng/mL AND</li> <li>• Fewer than 3 prostate biopsy fragments/cores positive, <math>\leq 50\%</math> cancer in each fragment/core<sup>h</sup> AND</li> <li>• PSA density <math>&lt; 0.15</math> ng/mL/g</li> </ul>	Observace (U)		
Low <sup>g</sup>	<ul style="list-style-type: none"> <li>• T1-T2a AND</li> <li>• Gleason score <math>\leq 6</math>/grade group 1 AND</li> <li>• PSA <math>&lt; 10</math> ng/mL</li> </ul>			
Favorable intermediate <sup>g</sup>	<ul style="list-style-type: none"> <li>• T2b-T2c OR</li> <li>• Gleason score 3+4=7/grade group 2 OR</li> <li>• PSA 10–20 ng/mL AND</li> <li>• Percentage of positive biopsy cores <math>&lt; 50\%</math></li> </ul>	<table border="1"> <tr> <td>Operace (U)</td> <td>RT (O)</td> </tr> </table>	Operace (U)	RT (O)
Operace (U)	RT (O)			
Unfavorable intermediate <sup>g</sup>	<ul style="list-style-type: none"> <li>• T2b-T2c OR</li> <li>• Gleason score 3+4=7/grade group 2 or Gleason score 4+3=7/grade group 3 OR</li> <li>• PSA 10–20 ng/mL</li> </ul>			
High	<ul style="list-style-type: none"> <li>• T3a OR</li> <li>• Gleason score 8/grade group 4 or Gleason score 4+5=9/grade group 5 OR</li> <li>• PSA <math>&gt; 20</math> ng/mL</li> </ul>			
Very high	<ul style="list-style-type: none"> <li>• T3b-T4 OR</li> <li>• Primary Gleason pattern 5 OR</li> <li>• <math>&gt; 4</math> cores with Gleason score 8–10/ grade group 4 or 5</li> </ul>	RT (O)		

# Jaké jsou výsledky aktivní léčby?

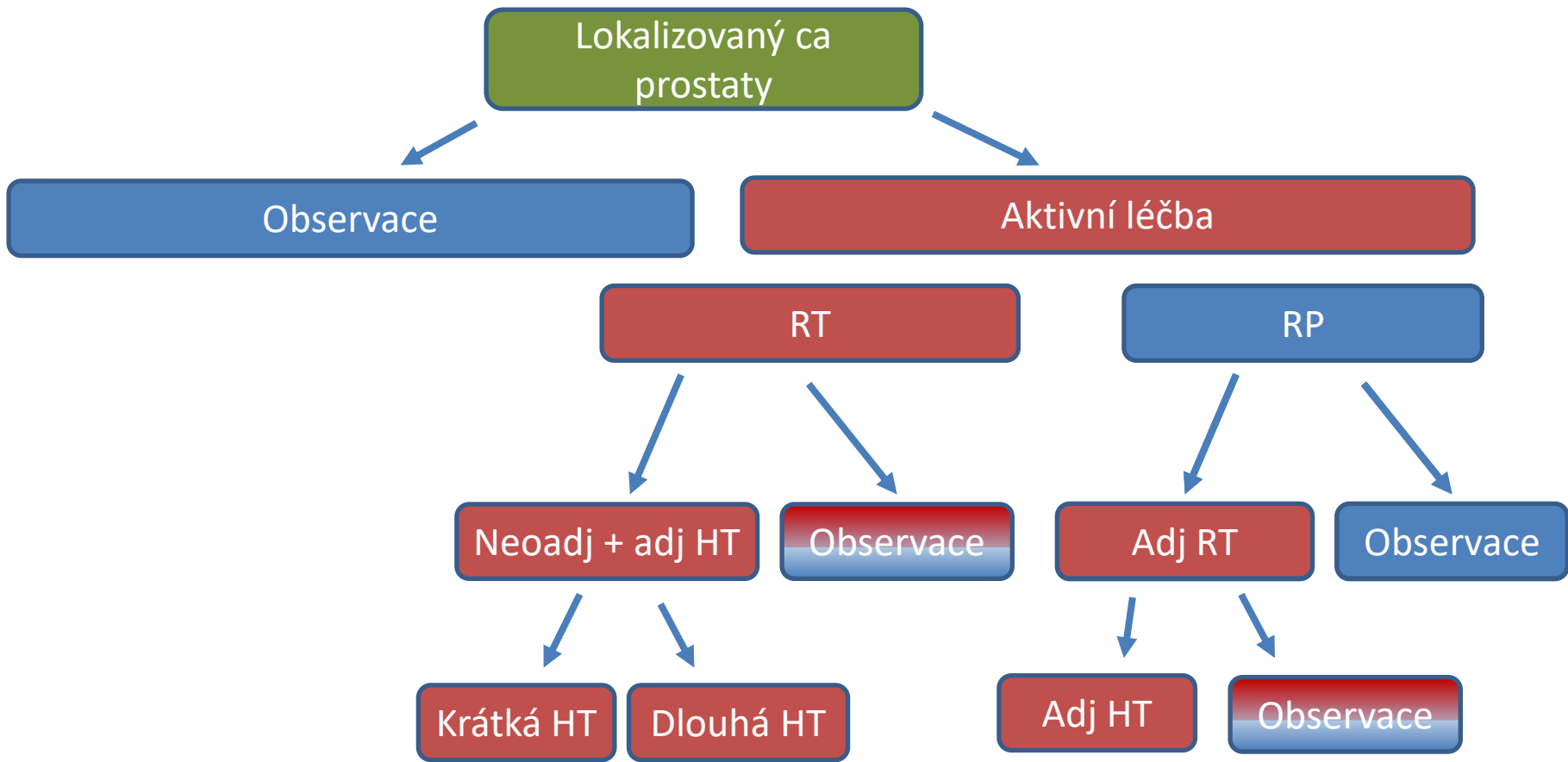
	Prostate Cancer Intervention versus Observation Trial (PIVOT)	Scandinavian Prostate Cancer Group (SPCG) Study 4	Prostate Testing for Cancer and Treatment ( ProtecT)
Comparison groups	Surgery vs watchful waiting	Surgery vs watchful waiting	Surgery vs radiation therapy vs active monitoring
Mortality, %			
All cause	47.0 vs 49.9 ( $P = .22$ ) <sup>a</sup>	57.6 vs 71.0 ( $P < .001$ ) <sup>a,b</sup>	9.9 vs 10.1 vs 10.8 ( $P = .87$ ) <sup>b</sup>
Prostate cancer	5.8 vs 8.4 ( $P = .09$ )	18.2 vs 28.4 ( $P = .001$ ) <sup>b</sup>	0.9 vs 0.7 vs 1.5 ( $P = .48$ ) <sup>a,b</sup>
Outcomes, %			
Metastasis	Bone: 4.7 vs 10.6 ( $P < .001$ )	Distant: 25.6 vs 39.7 ( $P < .001$ ) <sup>b</sup>	2.4 vs 2.9 vs 6.1 ( $P = .004$ ) <sup>b</sup>
Urinary incontinence at 2 y	17.1 vs 6.3 ( $P < .001$ ) <sup>c</sup>		≥1 Urine pad/d: 20.1 vs 4.1 vs 3.8 ( $P < .001$ )
Erectile dysfunction (insufficient firmness) at 2 y	81.1 vs 44.1 ( $P < .001$ )		81.1 vs 66.0 vs 52.9 ( $P < .001$ )
Bowel dysfunction (≥moderate problem) at 2 y	12.2 vs 11.3 ( $P = .74$ )		1.5 vs 6.3 vs 2.5 ( $P = .003$ )

**Figure.** Survival and Cumulative Mortality From Prostate Cancer and Other Causes Up to 20 Years After Diagnosis, Stratified by Age at Diagnosis and Gleason Score

Ale u pacientů s vysokým rizikem je situace jasná

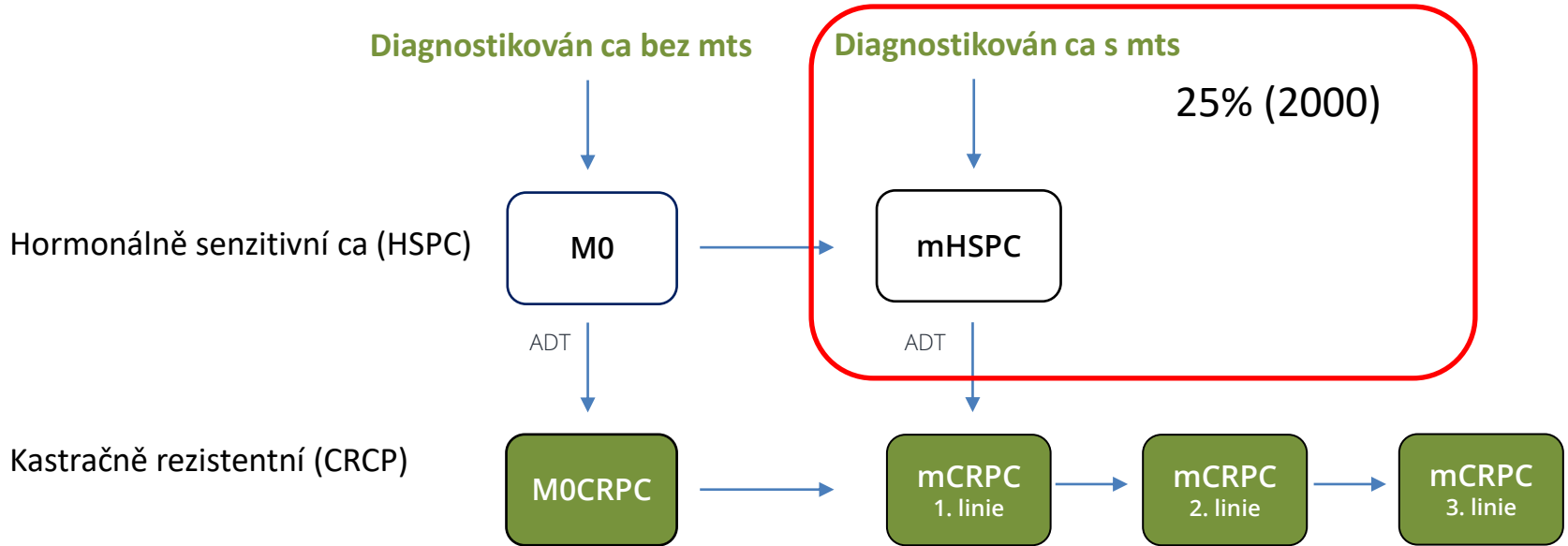


Albertsen et al, JAMA 2009

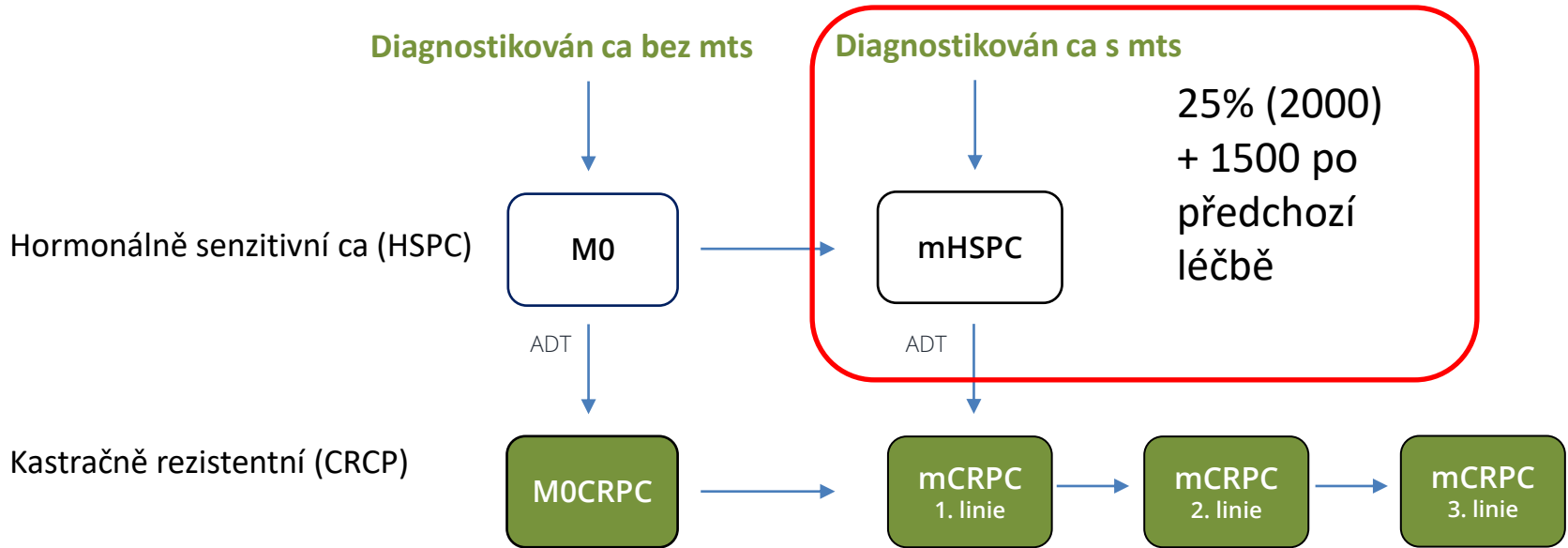




# Fáze onemocnění



# Fáze onemocnění



# Systemová léčba

## Androgenní deprivace

- Agonisty LHRH
- Antagonisty LHRH
- Orchiectomie

## Chemoterapie

- Docetaxel
- Cabazitaxel

## Nové hormonální léky (ARTA, ARPI)

- Abirateron
- Enzalutamid
- Apalutamid
- Darolutamid

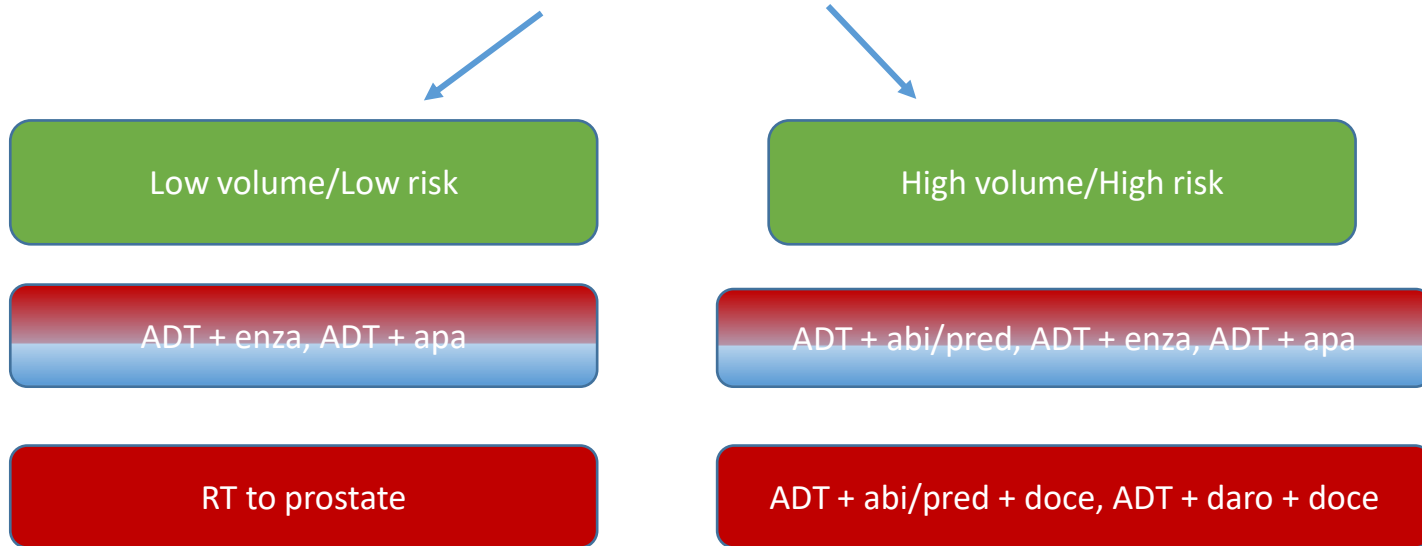
## Cílená léčba

- Olaparib
- Talazoparib

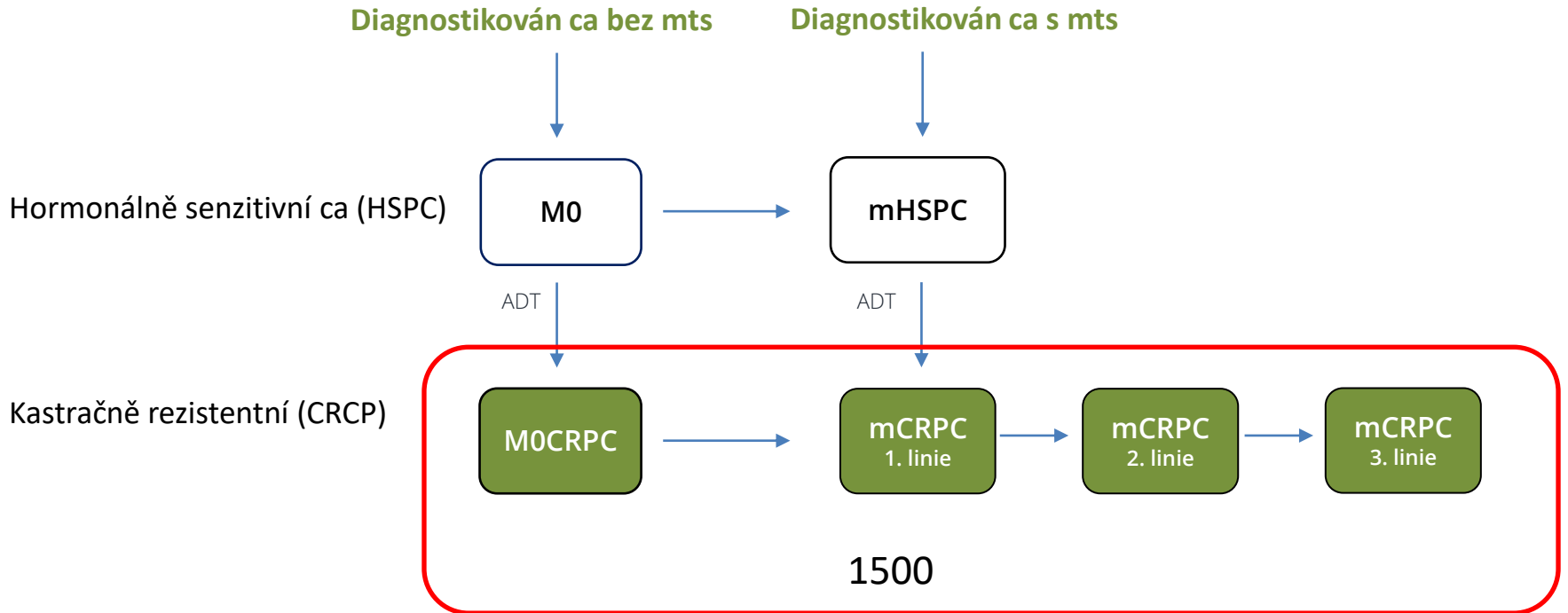
## Radioizotopy

- Lutetium-PSMA

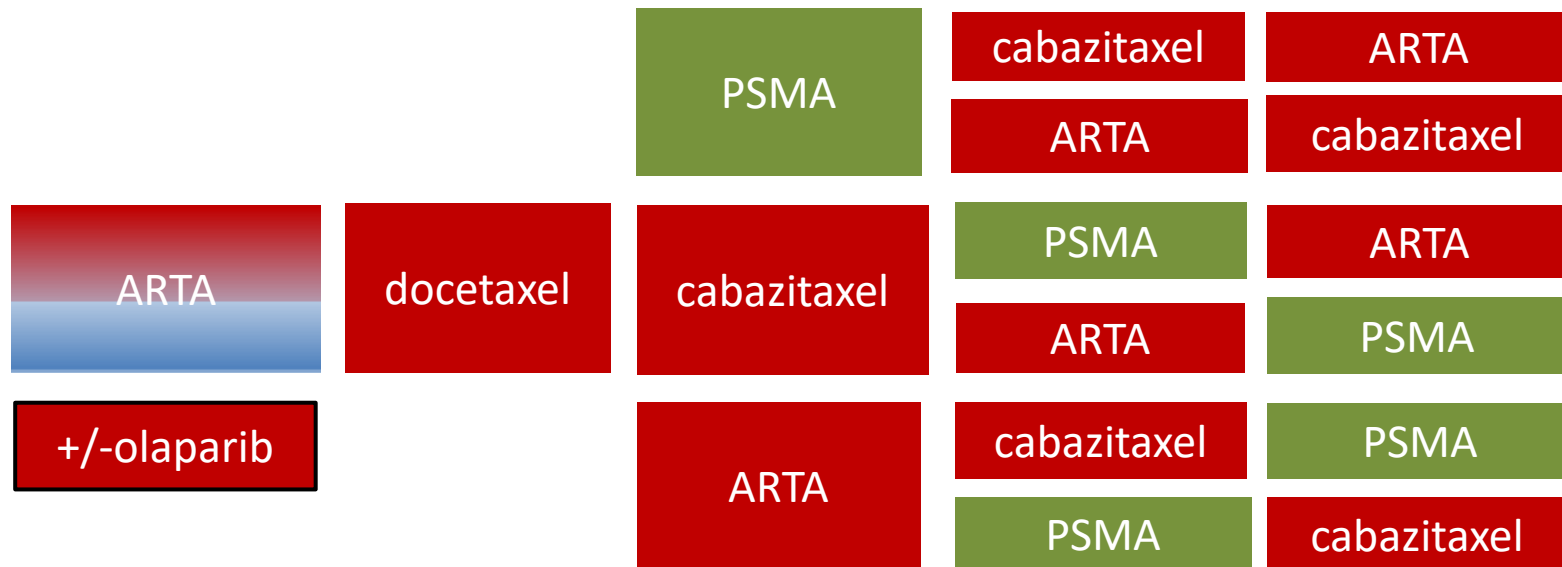
# mHSPC



# Fáze onemocnění



# mCRPC 2023: sequencing



Zvýšená frekvence močení/nykturie, inkontinence, obstrukce dolních a horních močových cest

Děkuji za pozornost.