

# Cílená biopsie prostaty zajistí přesnou diagnózu

---

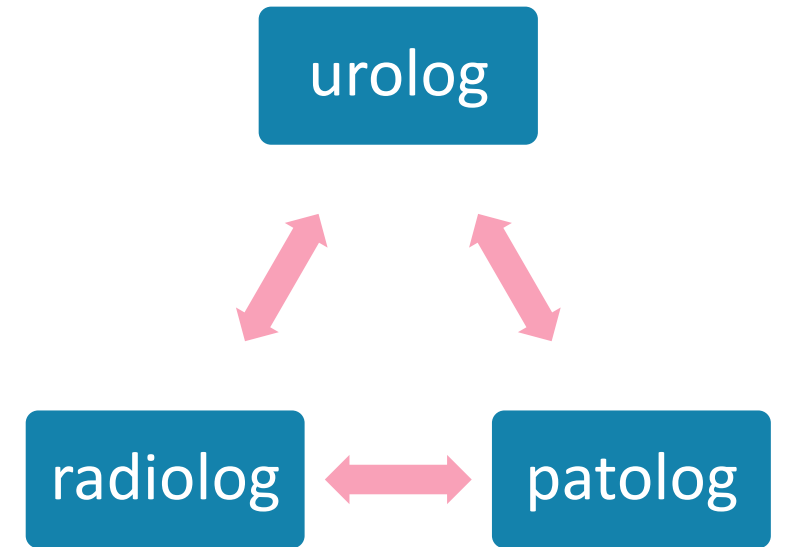
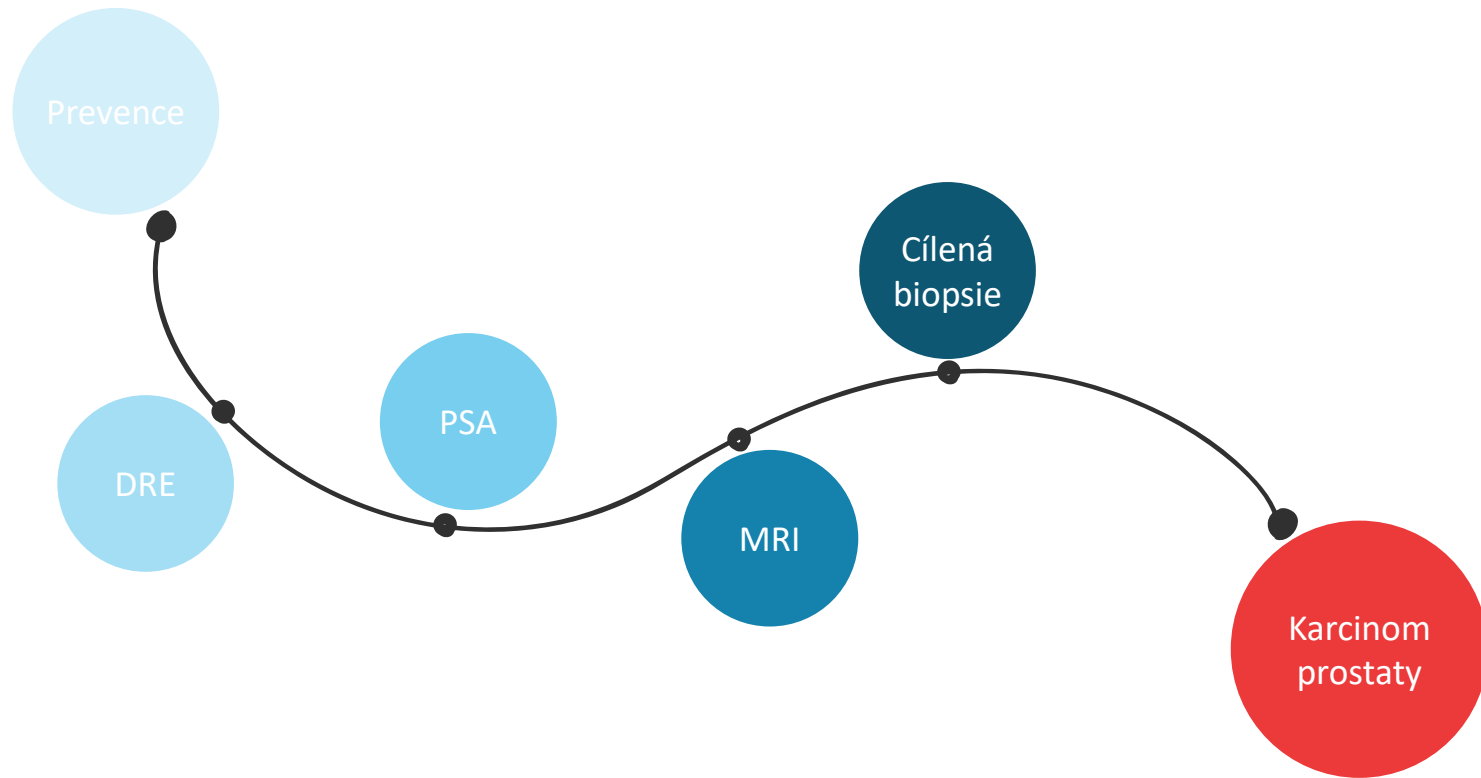
ONDŘEJ PŘÍMAN

UROLOGICKÁ KLINIKA 2. LF UK A FN MOTOL



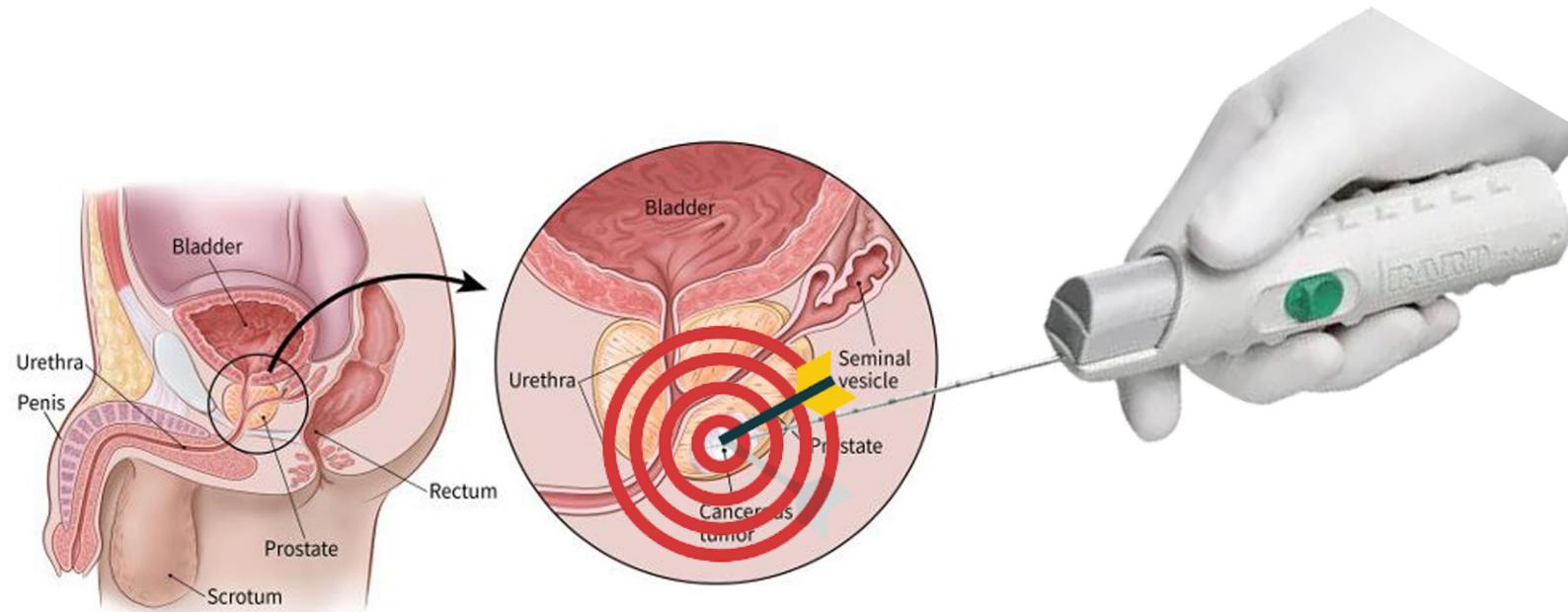
# Cesta ke správné diagnóze

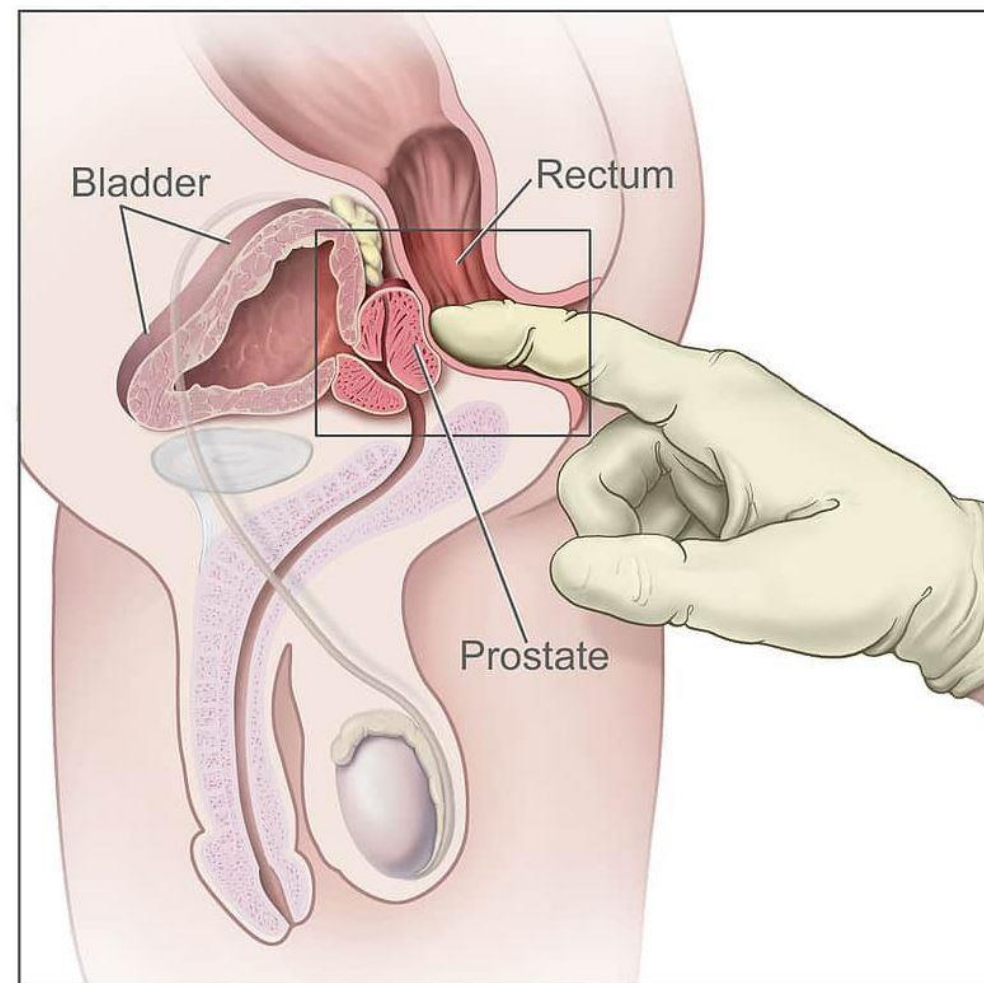
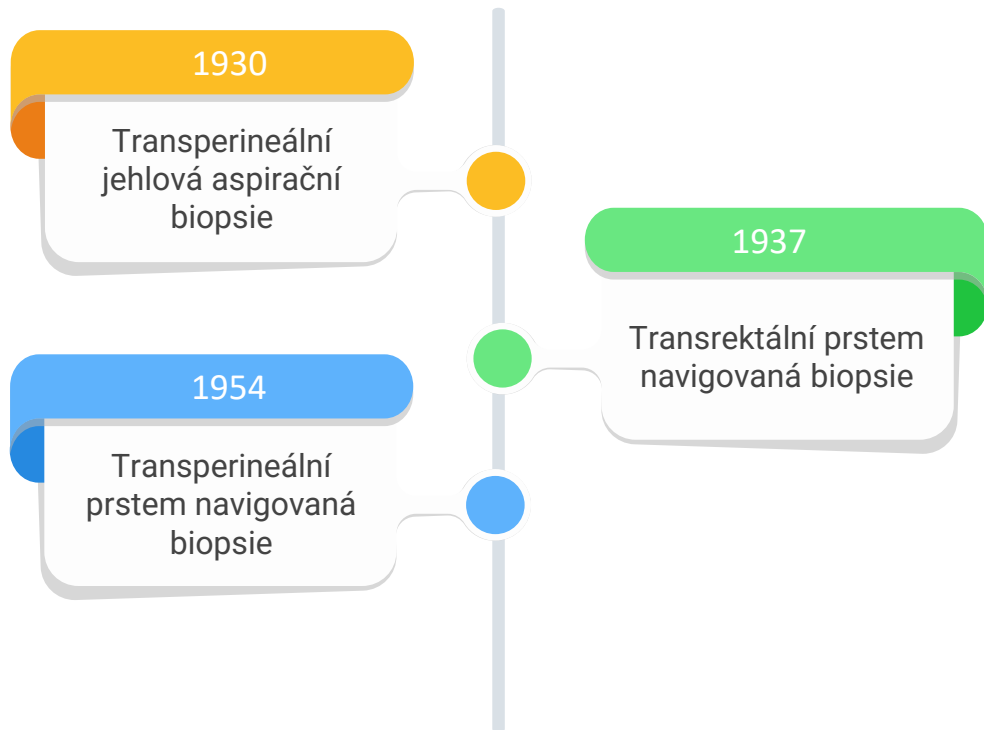
---

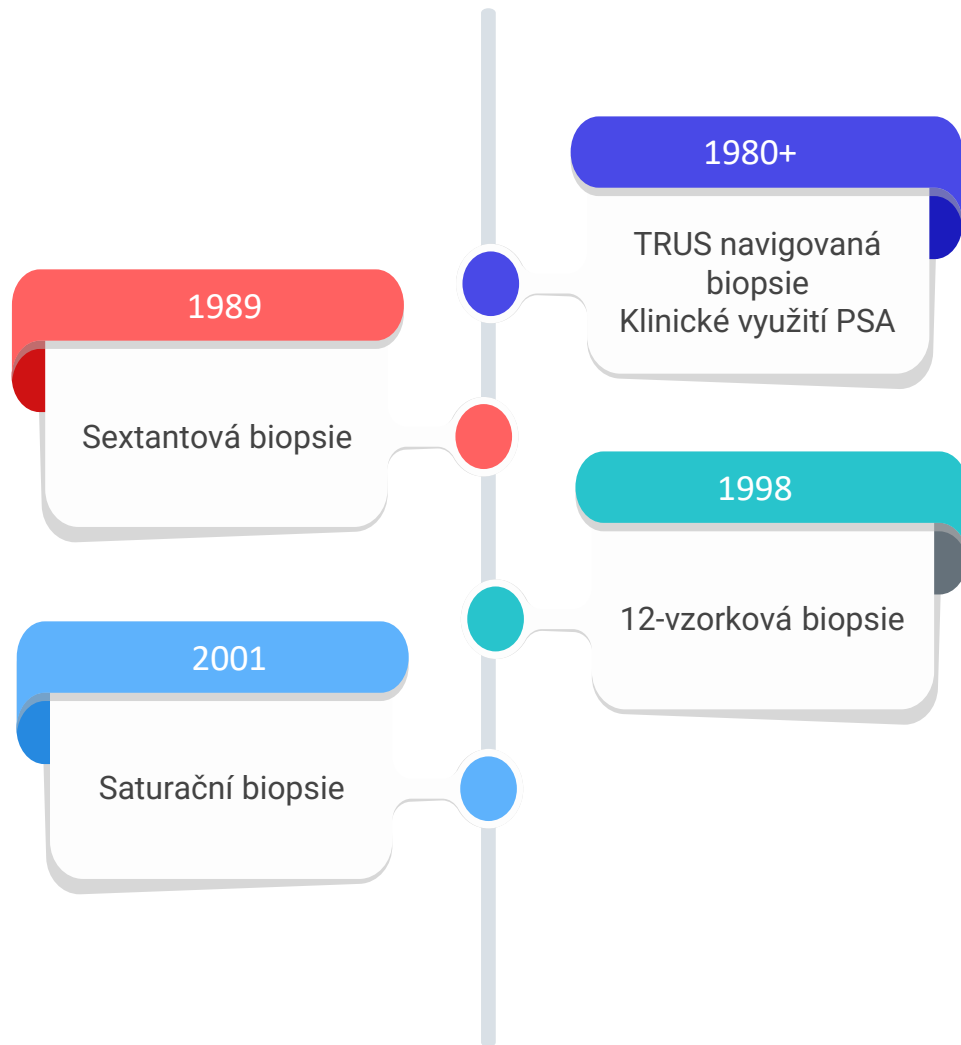


# Cílená biopsie prostaty

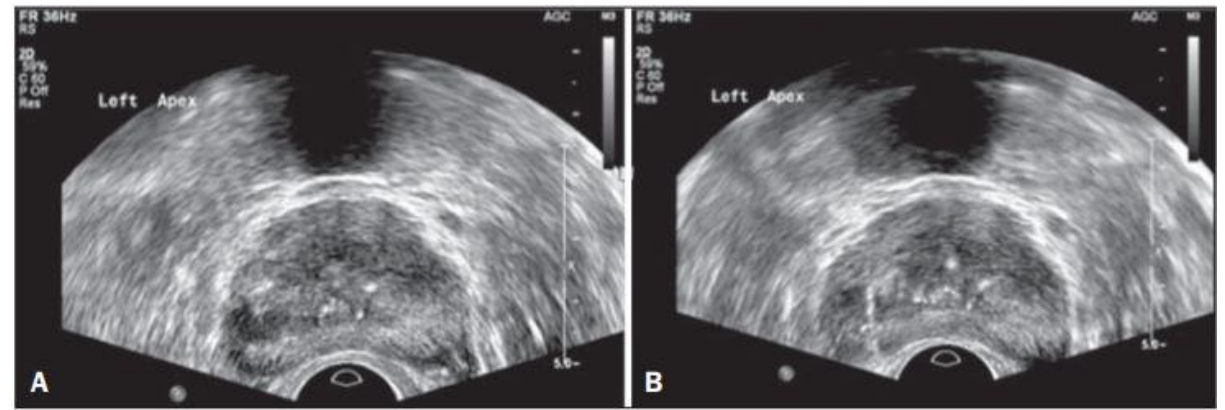
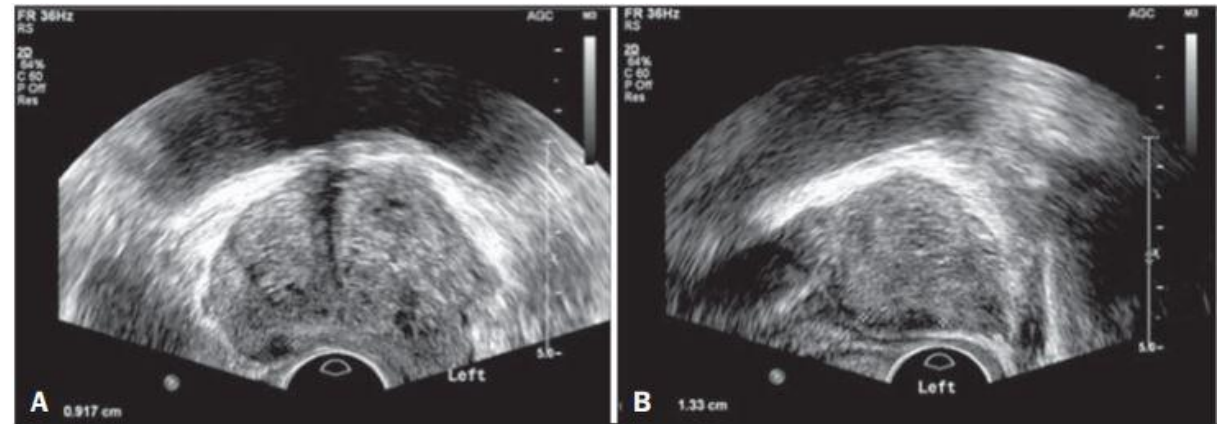
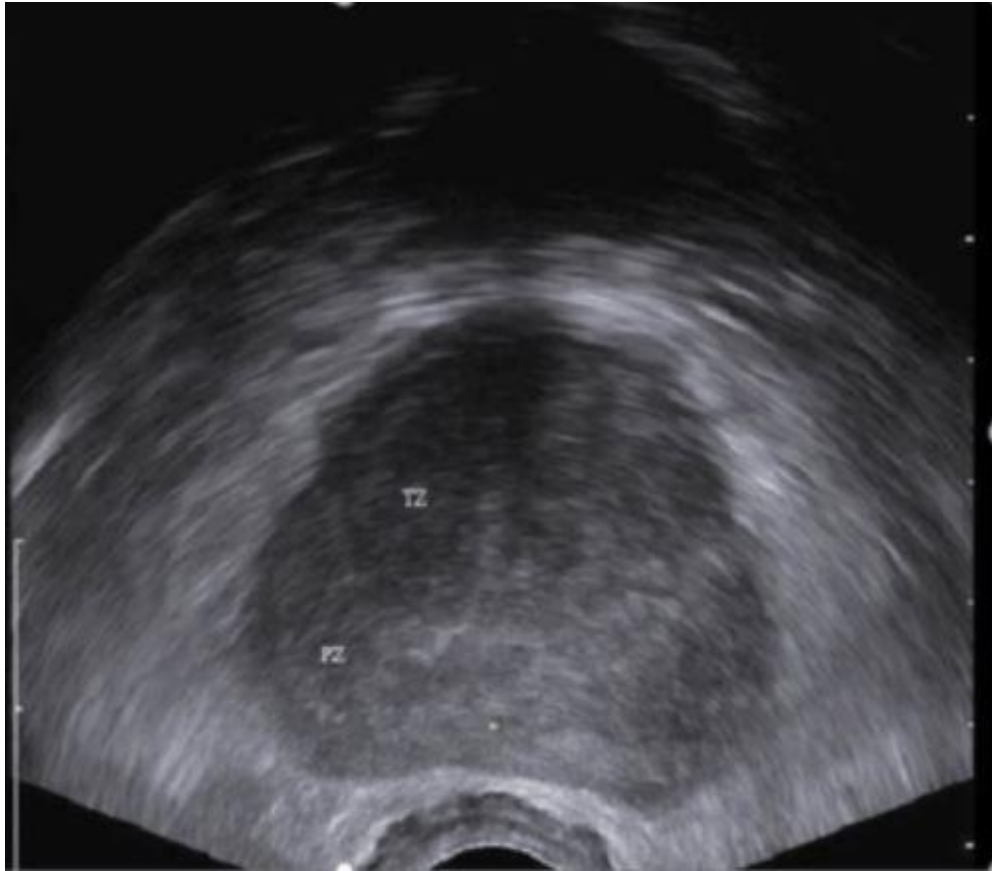
---

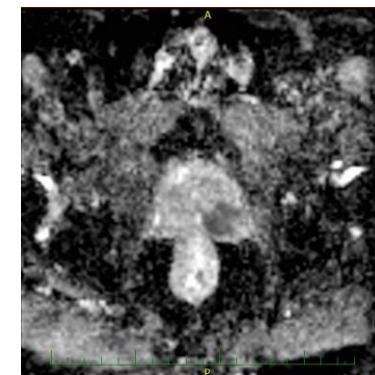
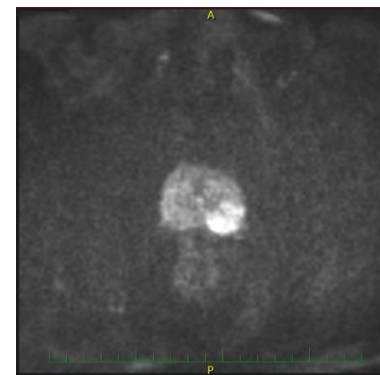
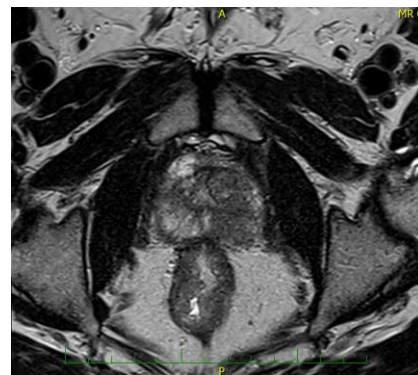
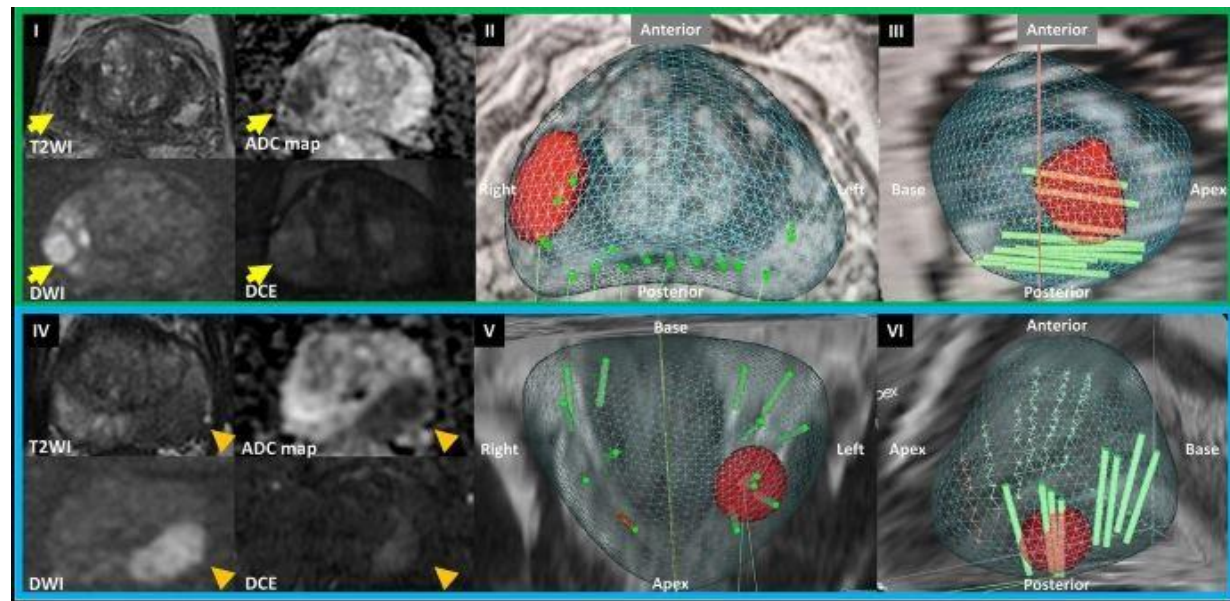
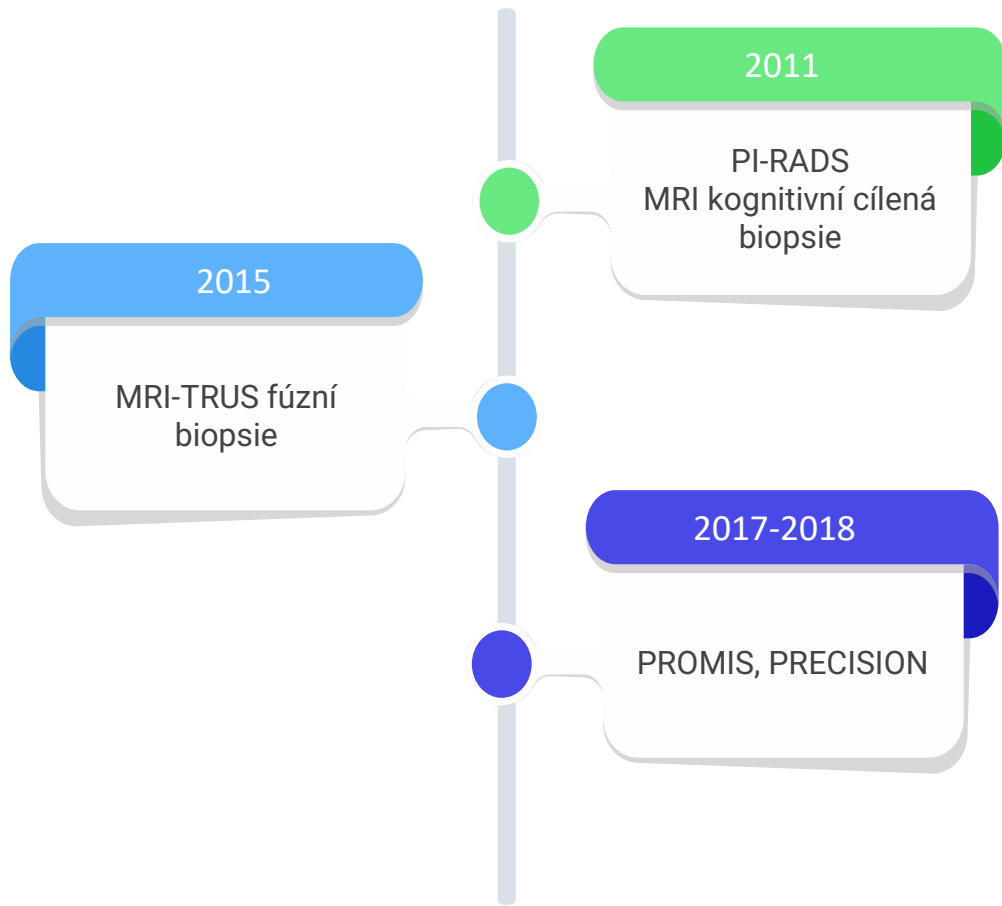






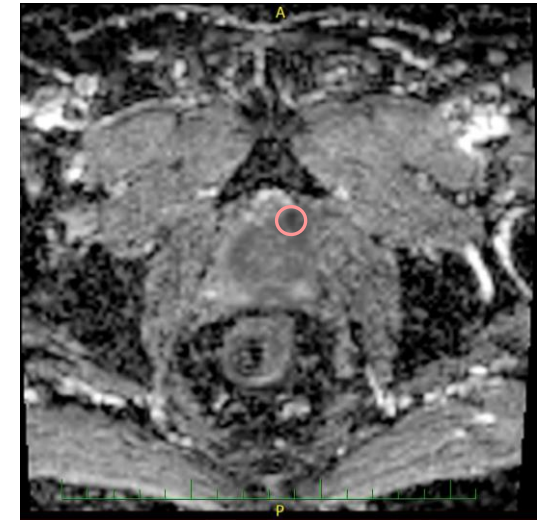
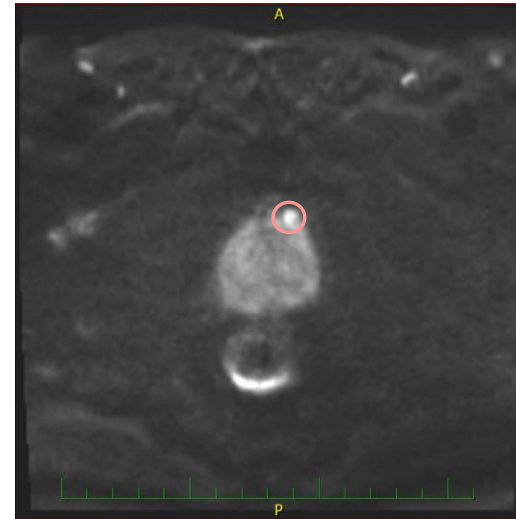
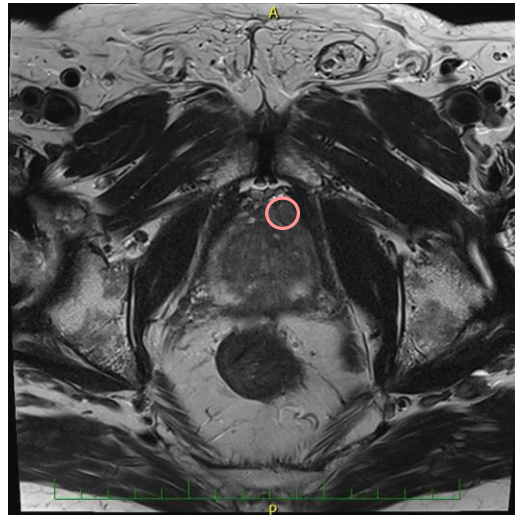
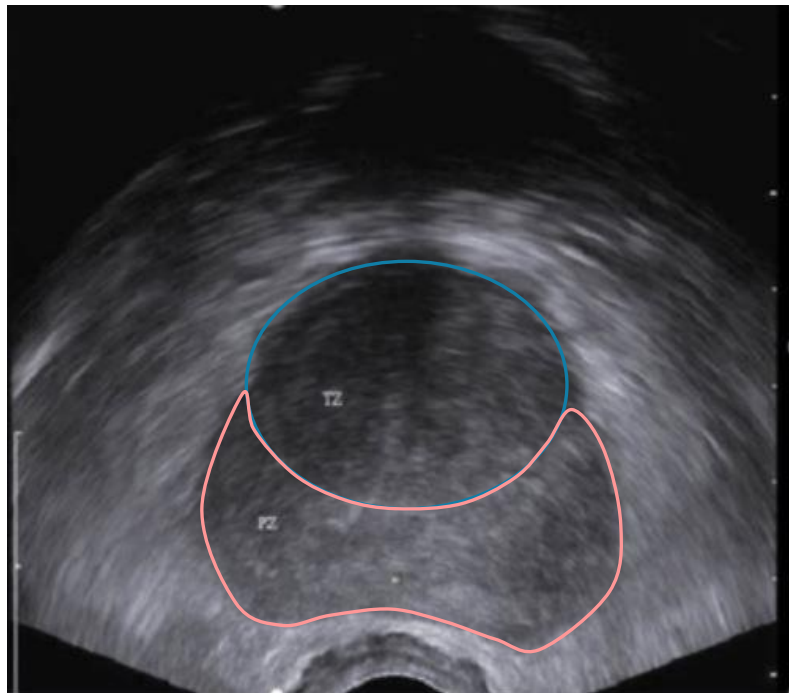
# Transrektální UZ prostaty (TRUS)





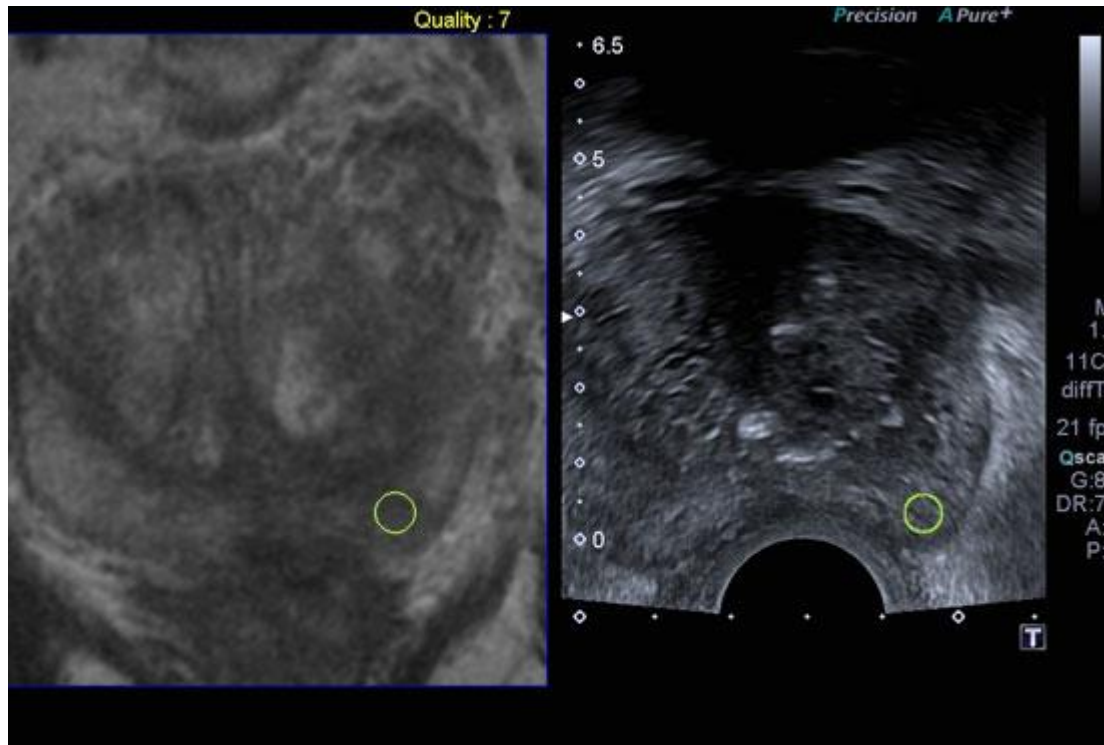
# Magnetická rezonance prostaty

---



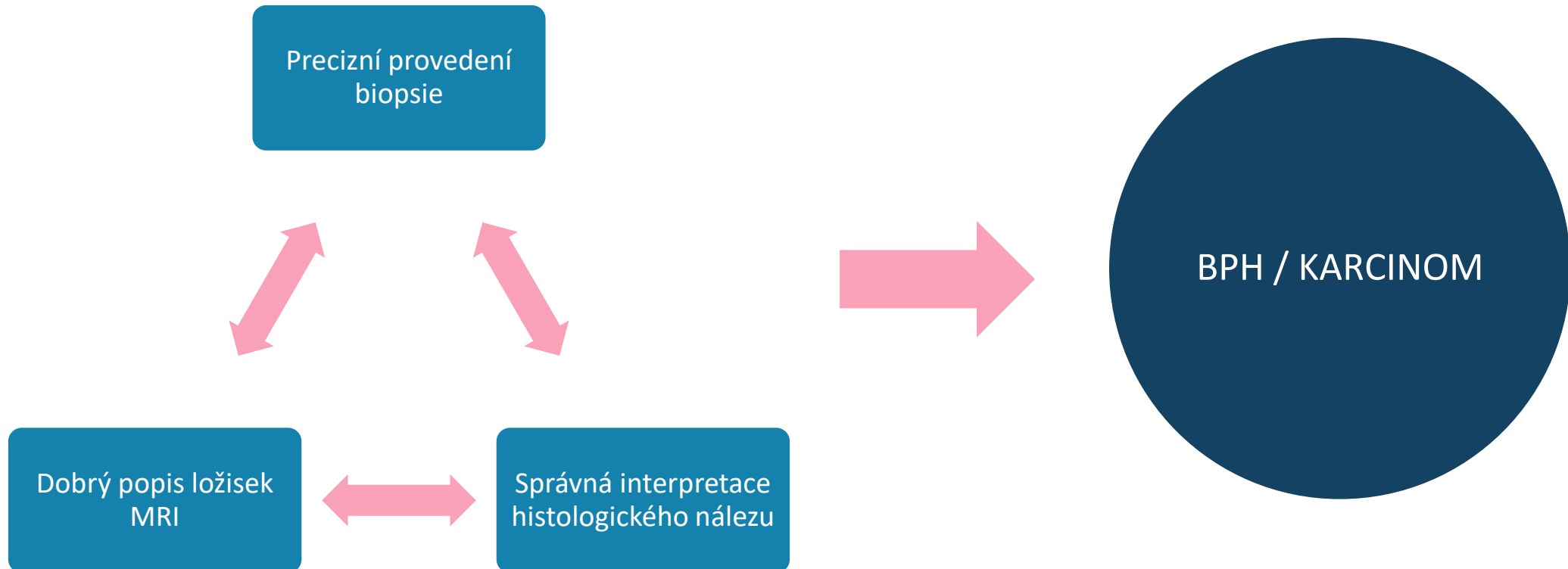


# Fúzní biopsie prostaty



# Spolupráce a zpětná vazba

---



# Děkuji za pozornost.

---

ONDŘEJ PŘÍMAN

UROLOGICKÁ KLINIKA 2. LF UK A FN MOTOL

E-MAIL: [ONDREJ.PRIMAN@FNMOTOL.CZ](mailto:ONDREJ.PRIMAN@FNMOTOL.CZ)

